



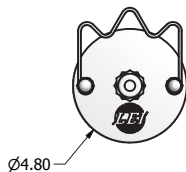
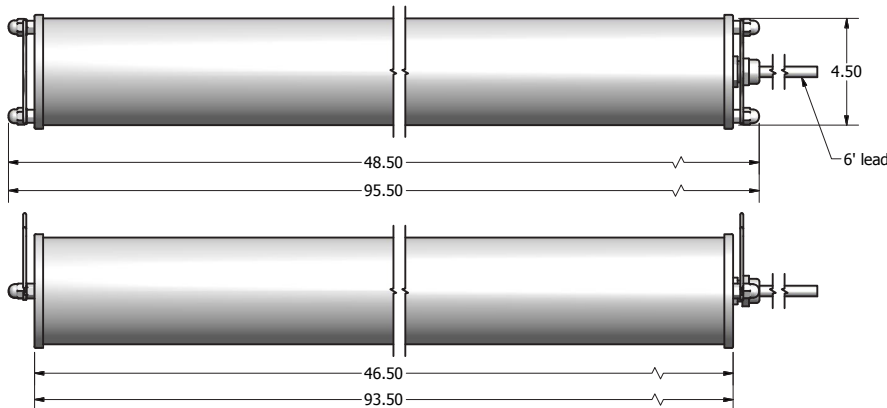
# WDL Series



## Description

The **WDL Series** is an energy efficient linear LED fixture designed specifically for heavy hose-down applications. The WDL utilizes a proprietary two point closure system comprised of stainless steel end caps and custom molded gaskets to ensure a positive seal. The component base design allows for quick and easy maintenance. The IP69K rated enclosure utilizes a robust .125" thick chemical and impact resistant **FROSTED** lens to provide a **GLARE FREE**, wide distribution light pattern similar to fluorescent products. ETL listed UL 1598 for Wet Location, Battery Back-Up, CSA Std. C22.2 No. 250.0, ANSI/NSF 2 for Splash Zones, and IP69K rated; the **WDL Series** is designed to hold up to daily sanitation while meeting all USDA requirements.

## Dimensions



Date	Catalog #
Type	Project
Prepared by	Comments

## Features and Specifications

### ENCLOSURE

High impact, .125" DR blended acrylic FROSTED tube sealed with custom molded gaskets and stainless steel endcaps. A proprietary two point closure system ensures a positive seal. All exposed hardware is stainless steel.

### INTERIOR HOUSING

Extruded aluminum gear tray with integrated LED mounting rails and proprietary stainless steel double studs. Driver(s) enclosed by a heat dissipating aluminum cover.

### ELECTRICAL

Universal voltage (120V-277V), constant current Class 2 driver. High quality, mid-power LED boards rated at 50,000 hours. Standard fixture supplied with 3-wire, yellow, six-foot, #16 AWG, STOW cable secured by a proprietary, stainless steel, potted strain relief.

### MOUNTING

Three stainless steel options available:

- Adjustable Wire Hanger Mount
- Proprietary Adjustable / Fixed Mount
- Proprietary Band Mount

### CERTIFICATIONS

- DLC listed
- ETL listed UL 1598 for Wet Location
- ETL listed UL 1598 for Battery Back-Up
- ETL listed CSA Std. C22.2 No. 250.0
- ETL listed ANSI/NSF 2 for Splash Zones
- IP69K rated

## Warranty

- 5-year limited warranty.  
(See LEI's LED Warranty for complete details.)

## Ordering Information

Example Catalog Number – W8-H45-85-U

<b>W</b>	<b>8</b>	-	<b>H</b>	<b>45-85</b>	-	<b>U</b>	-		-	
<b>A</b>	<b>B</b>		<b>C</b>	<b>D</b>		<b>E</b>		<b>F</b>		<b>G</b>
<b>Series</b>	<b>Length</b>		<b>Lumen Output</b>	<b>CCT and CRI</b>		<b>Voltage</b>		<b>Optional Power End</b>		<b>Optional Controls</b>

### Catalog Logic:

#### A. Series

W = WDL

#### B. Length

4 = 4'

8 = 8'

#### C. Lumen Output

M = Medium

H = High

#### D. CCT and CRI

45-85 = 4500K, 85 CRI

65-90 = 6500K, 90 CRI

#### E. Voltage

U = (120V-277V)

UNB = (120V-277V) Non-Switching Battery Back-Up

USB = (120V-277V) Switching Battery Back-Up

#### F. Optional Power End

All fixtures come standard with 6' Yellow Lead, 3-wire, 16 AWG. Or select from the options below.

R3 = Mini-Receptacle, 3-wire, Male

R4 = Mini-Receptacle, 4-wire, Male

4P6 = 6' Yellow Lead, 4-wire, 16 AWG

#### G. Optional Controls

MOS = Wet Location Motion Sensor

DMS = Dimming Motion Sensor -Wet

### Performance Data

Catalog Number	Length	Lumen Output	CCT	Actual Lumens	System Watts	Lumens per Watt	CRI
W4-M45-85-U	4'	Medium	4500K	7,027	55	128	85
W4-H45-85-U		High		8,389	69	121	85
W4-M65-90-U		Medium	6500K	5,194	56	93	95
W4-H65-90-U		High		6,493	71	92	95
W8-M45-85-U	8'	Medium	4500K	14,440	109	132	86
W8-H45-85-U		High		17,690	138	128	85
W8-M65-90-U		Medium	6500K	11,795	113	105	94
W8-H65-90-U		High		14,450	138	105	94

Numbers in italics are calculated using LED manufacturers' data.

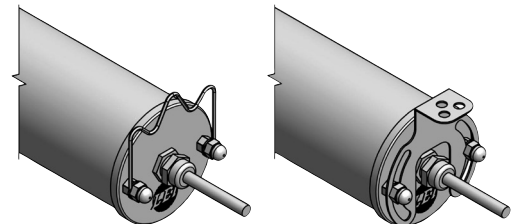
Consult factory for all available options & configurations.

Not all configurations of this fixture may be DLC qualified. Please consult the DLC Qualified Products list @ [www.designlights.org](http://www.designlights.org) to see if the version in which you are interested is listed.

## Replacement Parts & Accessories

SF3-6	Mini-Connector, 3-wire, Female – 6'
SF4-6	Mini-Connector, 4-wire, Female – 6'
WFT-4	Frosted Tube Lens – 4'
WFT-8	Frosted Tube Lens – 8'
W-ECK	Stainless Steel Non-Electrical End Cap Kit
W-ECKE	Stainless Steel Electrical End Cap Kit
W-AFK	Stainless Steel Adjustable/Fixed Mounting Kit
W-BMK	Stainless Steel Band Mounting Kit

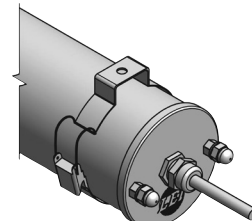
## Mounting Options



W-WHK

(Comes standard with fixture)

W-AFK



W-BMK

