



# LDM Series



Date	Catalog #
Type	Project
Prepared by	Comments

## Features and Specifications

### ENCLOSURE

Extruded aluminum housing engineered for maximum heat sink temperature dissipation in a low-profile footprint, enclosed by two aluminum end caps. Proprietary modern design allows for multiple mounting configurations.

### LENS

Impact resistant, UV stabilized, acrylic, snap-in, frosted lens.

### GEAR TRAY

Aluminum gear tray designed for easy service access to both the LED drivers and modules.

### ELECTRICAL

Universal voltage (120V-277V) LED driver. Fixtures supplied with 5000K greater than 80 CRI LEDs on LED boards. Optional yellow STOW cord, or quick disconnect available.

### MOUNTING

Stainless steel spring clip mounting brackets, for ceiling mount or Gripple "Angel" mount, standard. Optional stainless steel "Slide Loop" and "Adjustable" fixed mounting kits available.

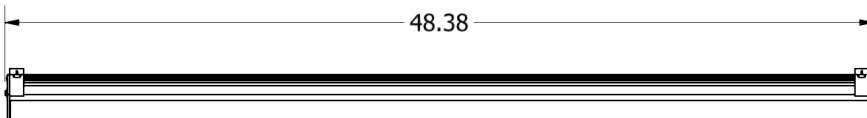
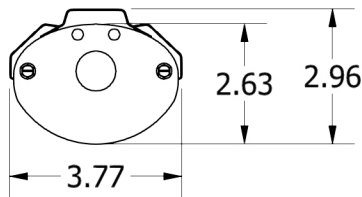
### CERTIFICATIONS

- DLC listed
- ETL listed UL 1598
- ETL listed UL 1598 for Battery Back-Up

## Description

The **LDM (Linear Dry Mount) Series** is a LED solution for general down lighting or aisle lighting applications. It is designed to reduce energy without sacrificing lumen output. It can be configured with a 10K, 5K or a 3K lumen package to meet your lighting requirements. The **LDM Series** utilizes proven LED technology in conjunction with a chemical and impact resistant **FROSTED** lens to provide a **GLARE FREE** work environment, similar to fluorescent products.

## Dimensions

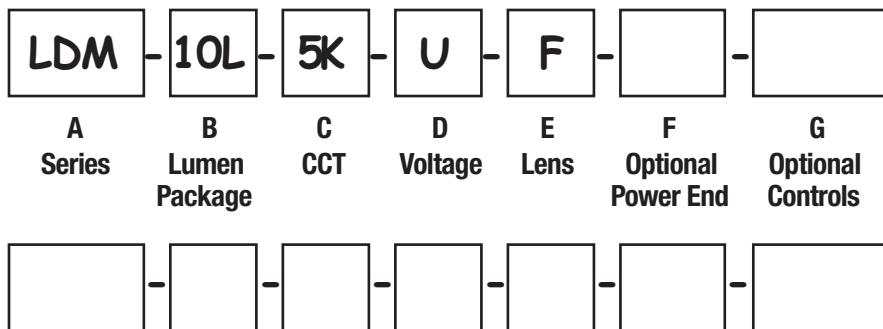


## Warranty

- 5-year limited warranty. (See LEI's LED Warranty for complete details.)

## Ordering Information

Example Catalog Number – LDM-10L-5K-U-F



### Catalog Logic:

#### A. Series

LDM = Linear Dry Mount

#### B. Lumen Package

10L = 10,000

5L = 5,000

3L = 3,000

#### C. CCT

5K = 5000K, 80 CRI

#### D. Voltage

U = (120V-277V)

UNB = (120V-277V) Non-Switching Battery Back-Up

USB = (120V-277V) Switching Battery Back-Up

#### E. Lens

F = Frosted Acrylic

#### F. Optional Power End

R3 = Mini-Receptacle, 3-wire, Male

P6 = 6' Yellow Lead, 3-wire, 16 AWG

R4 = Mini-Receptacle, 4-wire, Male

4P6 = 6' Yellow Lead, 4-wire, 16 AWG

#### G. Optional Controls

MSD = Dry Location Motion Sensor

### Performance Data

Lumen Package	Lens	CCT	Actual Lumens	System Watts	Lumens per Watt	CRI
10L	Frosted	5000K	10,170	73	138	84
5L			5,110	36	142	83
3L			3,937	34	116	83

Consult factory for all available options & configurations.

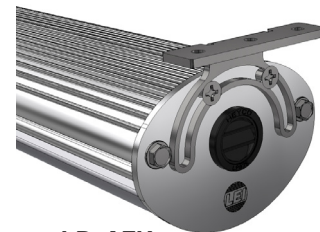
## Replacement Parts & Accessories

LD-LF	Frosted Acrylic Lens
LD-EC	Aluminum End Cap
SF3-6	Mini-Connector, 3-wire, Female – 6'
SF4-6	Mini-Connector, 4-wire, Female – 6'
LD-AFK	Stainless Steel Adjustable/Fixed Mounting Kit
LD-SLK	Stainless Steel Slide Lock Mounting Kit
LD-GAK-10	Stainless Steel 10' Gripple Angel Mounting Kit
LD-GAK-5	Stainless Steel 5' Gripple Angel Mounting Kit
LD-GAK-3	Stainless Steel 3' Gripple Angel Mounting Kit
LD-MBK	Stainless Steel Spring Clip Mounting Bracket Kit

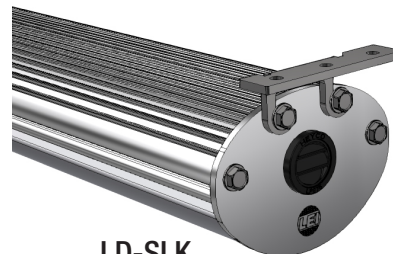
## Mounting Options



LD-MBK  
(Comes Standard)



LD-AFK



LD-SLK



LD-GAK  
(Length to be specified)

