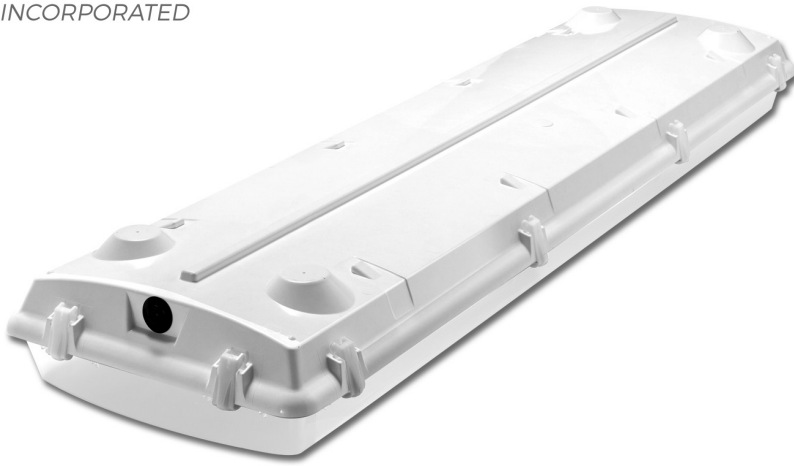




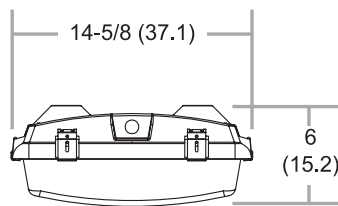
GPF-HM Series



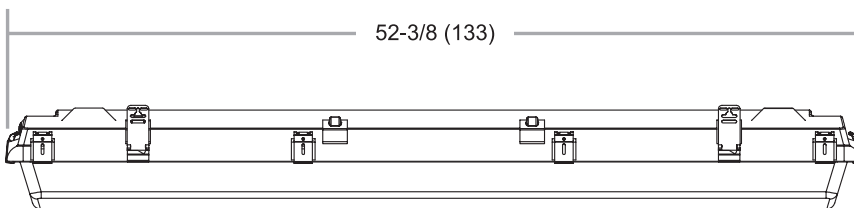
Description

The **GPF (General Purpose Fluorescent) Series** is a rugged non-metallic fluorescent luminaire specifically designed as an alternative, energy saving solution to replace most 250 thru 400 watt metal halide fixtures. The GPF is ideal for food processing facilities, cold storage plants, dairies, bottling facilities and any industrial environment where water spray, humidity, dust or corrosive chemicals are present.

Dimensions



END VIEW



SIDE VIEW

Date	Catalog #
Type	Project
Prepared by	Comments

Features and Specifications

ENCLOSURE

Fiberglass reinforced polyester housing is UL 94 and UL 746 5VA flammability rated. Built in heat management system allows fixture to operate in high ambient environments. Poured-in-place continuous closed cell gasket provided a seamless seal for lens.

LENS

Impact resistant, UV stabilized, clear acrylic lens is held tightly in place by twelve plastic or optional stainless steel captive latches to assure a positive seal and lens retention. Optional polycarbonate lens available.

GEAR TRAY

Secured in place by four internal stainless steel clips, the painted 22 gauge metal gear tray can be opened from either side for quick and easy maintenance. Internal mirror reflectors are optional.

ELECTRICAL

Thermally protected Class P electronic ballast and rotor lock lampholders rated for wattage and voltage standard. Fixture supplied with 1/2" NTP entries in each end. Available with optional 6' lead or 3 or 4 wire mini-male receptacle.

MOUNTING

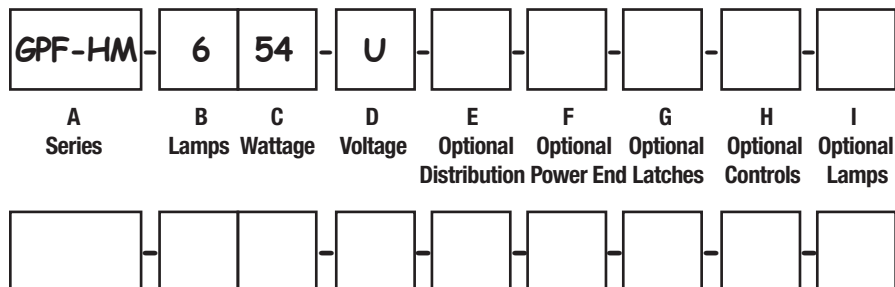
Fixture comes standard with two stainless steel V-Hook hangers and four stainless steel mounting straps. Mounting straps allow for mounting with optional stainless steel cable mounting system. Optional stainless steel mounting beam kit also available.

CERTIFICATIONS

- ETL Listed UL 1598 for Wet Location
- ETL Listed CSA Std C22.2 No.250.0
- NSF Certified
- IP65, IP66, IP67 Certified
- NEMA 4X Certified
- High Pressure Tested at 1500 PSI

Ordering Information

Example Catalog Number – GPF-HM-654-U



Catalog Logic:

A. Series

GPF-HM = General Purpose Fluorescent w/ HEAT MANAGEMENT

B. Lamps

4
6

C. Wattage

54 = 54 watt T5HO

D. Voltage

U = (120V-277V)
48 = 480V

UNB = (120V-277V) Non-Switching Battery Back-Up

USB = (120V-277V) Switching Battery Back-Up

48NB = 480V Non-Switching Battery Back-Up

48SB = 480V Switching Battery Back-Up

E. Optional Distribution

M = Mirror Reflector

F. Optional Power End

R3 = Mini-Receptacle, 3-wire, Male

P6 = 6' Yellow Lead, 3-wire, 16 AWG

R4 = Mini-Receptacle, 4-wire, Male

4P6 = 6' Yellow Lead, 4-wire, 16 AWG

G. Optional Latches

All fixtures come standard with plastic latches. Or select from the options below:

S = Stainless Steel Captive Latches

H. Optional Controls

MS = Wet Location Motion Sensor

MS40 = Wet Location Motion Sensor for 40'

MSD = Dry Location Motion Sensor

I. Optional Lamps

L41 = Non-Coated 4100K

CL41 = Coated 4100K

Consult factory for all available options & configurations

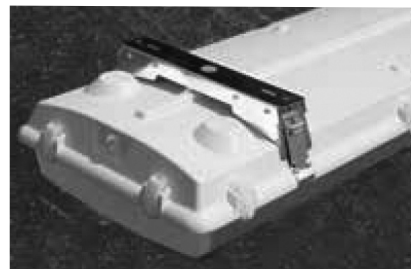
Replacement Parts & Accessories

F-LNA	Clear Acrylic Lens
G-PL	Plastic Latch 1 ea.
G-SSL	Stainless Steel Captive Latch 1 ea.
G-SMS	Stainless Steel Mounting Strap 1 ea.
SF3-6	Mini-Connector, 3-wire, Female – 6'
SF4-6	Mini-Connector, 4-wire, Female – 6'
F-VHK KIT	Stainless Steel V-Hook Mounting Kit
GSY-10	Stainless Steel 10' Y-Grip Cable Mounting Kit
G-SMB KIT	Stainless Steel Mounting Beam Kit

Mounting Options



G-SMS
(Comes Standard)



G-SMB KIT

