



WDL Series With Colored Diffusers

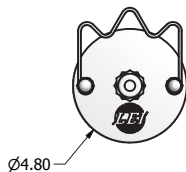
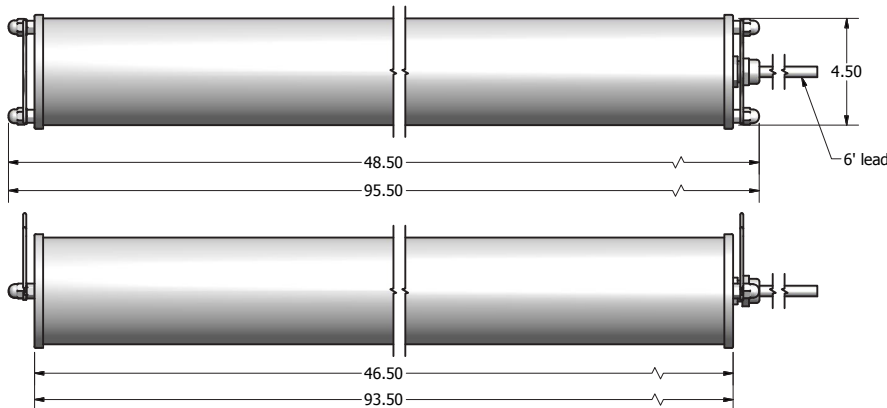


Not DLC Listed

Description

The **WDL Series** is an energy efficient linear LED fixture designed specifically for heavy hose-down applications. The WDL utilizes a proprietary two point closure system comprised of stainless steel end caps and custom molded gaskets to ensure a positive seal. The component base design allows for quick and easy maintenance. The IP69K rated enclosure utilizes a robust .125" thick chemical and impact resistant **FROSTED** lens to provide a **GLARE FREE**, wide distribution light pattern similar to fluorescent products. ETL listed UL 1598 for Wet Location, Battery Back-Up, CSA Std. C22.2 No. 250.0, ANSI/NSF 2 for Splash Zones, and IP69K rated; the **WDL Series** is designed to hold up to daily sanitation while meeting all USDA requirements.

Dimensions



Date	Catalog #
Type	Project
Prepared by	Comments

Features and Specifications

ENCLOSURE

High impact, .125" DR blended acrylic FROSTED tube with internal colored lens diffuser, sealed with custom molded gaskets and stainless steel endcaps. A proprietary two-point closure system ensures a positive seal. All exposed hardware is stainless steel.

INTERIOR HOUSING

Extruded aluminum gear tray with integrated LED mounting rails and proprietary stainless steel double studs. Driver(s) enclosed by a heat dissipating aluminum cover.

ELECTRICAL

Universal voltage (120V-277V), constant current Class 2 driver. High quality, mid-power LED boards rated at 50,000 hours. Standard fixture supplied with 3-wire, yellow, six-foot, #16 AWG, STOW cable secured by a proprietary, stainless steel, potted strain relief.

MOUNTING

Three stainless steel options available:

- Adjustable Wire Hanger Mount
- Proprietary Adjustable / Fixed Mount
- Proprietary Band Mount

CERTIFICATIONS

- ETL listed UL 1598 for Wet Location
- ETL listed UL 1598 for Battery Back-Up
- ETL listed CSA Std. C22.2 No. 250.0
- ETL listed ANSI/NSF 2 for Splash Zones
- IP69K rated

Warranty

- 5-year limited warranty.
(See LEI's LED Warranty for complete details.)

Ordering Information

Example Catalog Number – W8-M45-85-U-BF

W	8	M	45-85	U			BF
A	B	C	D	E	F	G	H
Series	Length	Lumen Output	CCT and CRI	Voltage	Optional Power End	Optional Controls	Diffuser

Catalog Logic:

A. Series

W = WDL

B. Length

4 = 4'
8 = 8'

C. Lumen Output

M = Medium
H = High

D. CCT and CRI

45-85 = 4500K, 85 CRI
65-90 = 6500K, 90 CRI

E. Voltage

U = (120V-277V)
UNB = (120V-277V) Non-Switching Battery Back-Up
USB = (120V-277V) Switching Battery Back-Up

F. Optional Power End

All fixtures come standard with 6' Yellow Lead, 3-wire, 16 AWG. Or select from the options below.

R3 = Mini-Receptacle, 3-wire, Male
R4 = Mini-Receptacle, 4-wire, Male
4P6 = 6' Yellow Lead, 4-wire, 16 AWG

G. Optional Controls

MS = Wet Location Motion Sensor
MSD = Dry Location Motion Sensor

H. Diffusers

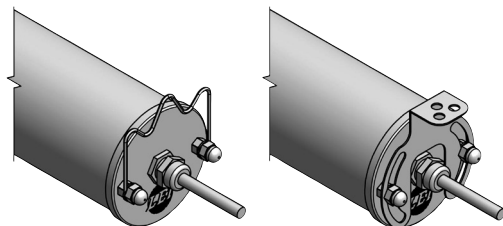
BF = Blue Lens Diffuser
RF = Red Lens Diffuser

Consult factory for all available options & configurations.

Replacement Parts & Accessories

SF3-6	Mini-Connector, 3-wire, Female – 6'
SF4-6	Mini-Connector, 4-wire, Female – 6'
WFT-4	Frosted Tube Lens – 4'
WFT-8	Frosted Tube Lens – 8'
W-ECK	Stainless Steel Non-Electrical End Cap Kit
W-ECKE	Stainless Steel Electrical End Cap Kit
W-AFK	Stainless Steel Adjustable/Fixed Mounting Kit
W-BMK	Stainless Steel Band Mounting Kit

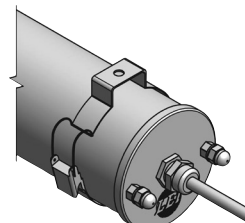
Mounting Options



W-WHK

W-AFK

(Comes standard with fixture)



W-BMK



LIGHTING
ETC. INCORPORATED