

VG LED

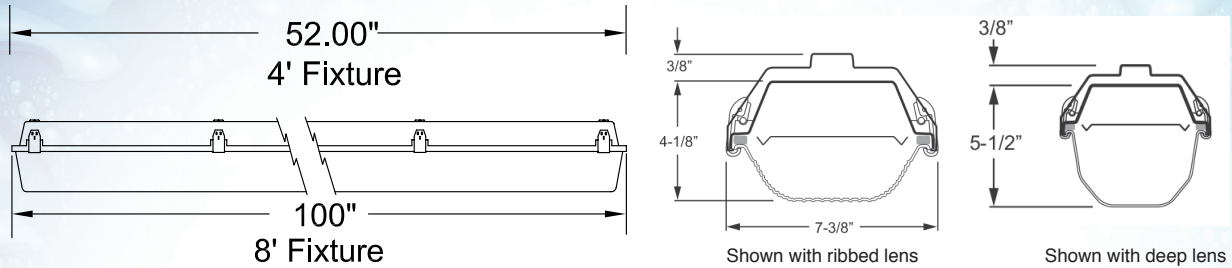


- 50,000+ Hours Rated LED Life
- Available in 4000 CCT and 5000 CCT
- Conformal Coated LEDs
- Universal Voltage Driver (120V – 277V)
- Maintenance Friendly Construction
- Rugged 5Va, Non-Metallic Housing
- Poured-in-Place, Closed-Cell Gasket
- Optional Stainless Steel Captive Latches
- Stainless Steel Mounting Kit
- DLC Listed
- ETL Listed UL 1598 for Wet Location
- ETL Listed UL 1598 for Battery Back-Up
- ETL Listed CSA Std C22.2 No. 250.0
- NSF Certified
- IP65, IP66, IP67 Certified
- NEMA 4X Certified
- High Pressure Tested at 1500 PSI

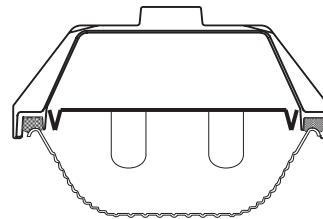
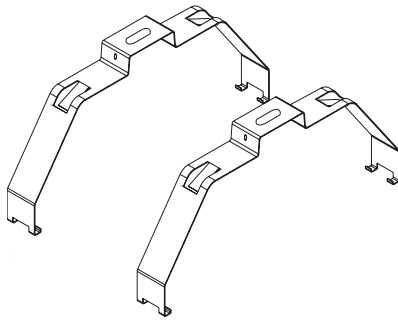
PRODUCT OVERVIEW

The **VG LED Series** is a non-metallic LED energy saving high output fixture for use in wet environments where constant humidity or moisture is present. It is comprised of a heavy duty one piece 5VA rated housing and a high impact resistant lens, which is held in place on a poured-in, closed-cell gasket by plastic or optional stainless steel captive latches. The **VG LED Series** is available in 4' and 8' lengths with medium or high output lumen package options. Food processors, breweries, dairies, parking garages and car washes are just some of the areas that can benefit from the **VG LED Series**.

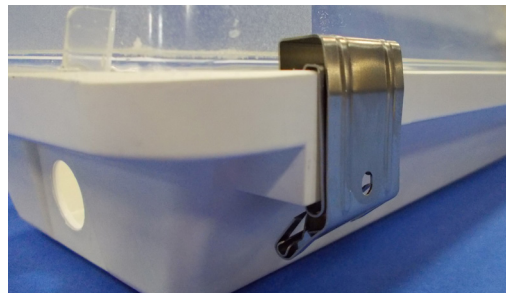
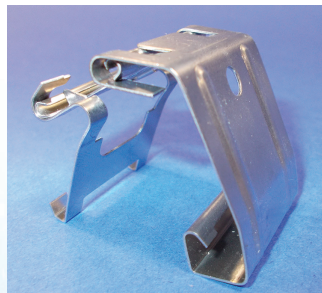
DIMENSIONS



MOUNTING OPTIONS



OPTIONAL STAINLESS STEEL LATCHES



LEI • (281) 992-8308 • FAX: (281) 996-0488 • sales@lighting-etc.com
www.lighting-etc.com • PO Box 3403 • Pearland, TX 77588

LIGHTING ETC.
INCORPORATED