

PIPE LITE™



**NO
TUBE
TO REPLACE!**



**SAVE
MONEY
AND TIME**

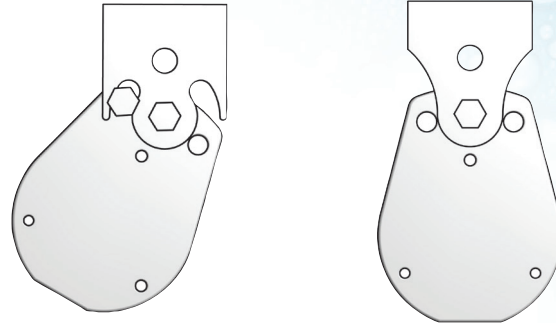
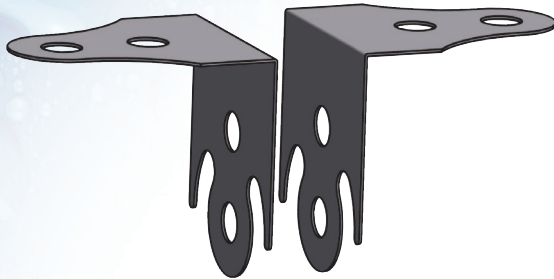
- Heavy Duty Aluminum Extrusion
- Stainless Steel End Caps
- Low Profile, Smooth Water-Shed Design
- Unique "DRIP-EDGE"™
- Available in 2, 4 and 8-foot Models
- Patent Pending Linear Optic
- Universal Voltage (120V - 277V) Driver
- 4000K CCT, >85 CRI LEDs
- 50,000+ Hours Rated LED Life
- Flexible Mounting Options
- ETL Listed UL 1598 for Wet Location
- ETL Listed UL 1598 for Battery Back-Up
- ETL Listed ANSI/NSF 2 for Splash Zones
- ETL Listed CSA Std C22.2 No.250.0
- IP69K Rated



PRODUCT OVERVIEW

The **PIPE LITE Series** is the first cost effective LED task lighting solution for the food processing industry. Engineered with the latest energy efficient LED technology and patent pending linear optic, the **PIPE LITE Series** is a durable and sustainable alternative to existing fluorescent task lighting products. The IP69K rated housing allows for easy clean-up while withstanding the rigors of daily sanitation. The tube-less design greatly reduces the total cost of ownership by eliminating the expense of replacement tubes and the associated maintenance costs. The **PIPE LITE Series** is ETL tested and certified to UL standards.

DUAL MOUNTING KIT



WHAT IS IP69K?

The IP69K rating is for applications where high temperature and high pressure wash-down is used to clean and sanitize equipment. The rating was established in 1993 as an extension to the IEC 60529 standard which was initially developed for road vehicles that required regular intensive cleaning such as dump trucks and cement mixers. The Food and Beverage industries have adopted the IP69K rating as a durability test for products which are subjected to the daily sanitation process. The “6” applies to external protection from dust. The “9” signifies protection from close range high-pressure spray-downs, and the “K” applies to the high-temperature of the water used during the spray-downs.

The IP69K test requires the water pressure to be between 1160-1450 PSI, at a rate of about 4 gallons per minute and at a temperature of 176° F. The nozzle from which the water is sprayed is between 4 to 6 inches from the product. The spray is applied at the angles of 0°, 30°, 60° and 90° for 30 seconds at each angle while the product is rotated at 5 rpm.

The IP69K and NEMA Type 4 standards both require the product to protect against the entry of water during a wash-down, but this is where the similarities end. The Type 4 test is mainly concerned with low pressure water at greater water volume and longer test distances (10-12 foot). In contrast, the IP69K test is performed at very close range, (4-6 inches), low volume of water, but at very high pressures and temperatures. Task lighting fixtures are typically mounted at low levels and hosed-down at close range with high temperature water; an IP69K rated fixture is better suited for the application than a NEMA 4X fixture.

DIMENSIONS

