

Date	Catalog #
Type	Project
Prepared by	Comments

Freezer Lighting

P4-FZ

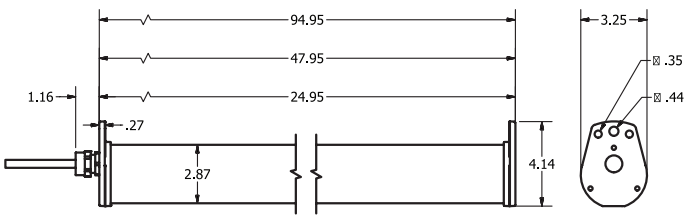


4 foot unit is standard

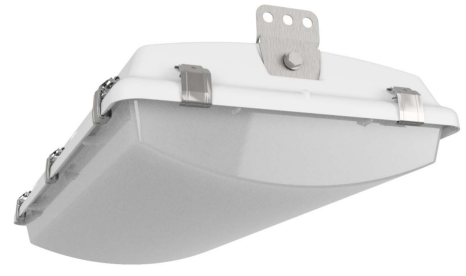
Features and Specifications

The **PIPE LITE-FZ Series (4' - Aluminum Rough Service LED)** is the first choice for a low profile, corner fit LED fixture freezer application. Allowing more room to maneuver in a tight spiral freezer and the lens is protected by the aluminum cylinder. Stainless endcaps are standard. Completely assembled and ready to install "out of the box".

Dimensions



NML2-RS-FZ

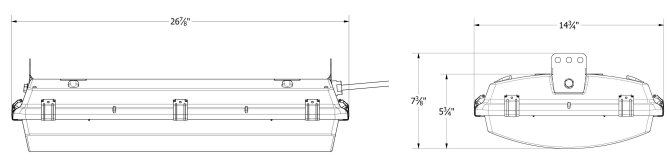


2 foot unit is standard

Features and Specifications

The **NML2-RS-FZ (2'-Non-Metallic LED – Rough Service) Series** is the new 2' compact LED solution configured with a 24K lumen package. Completely assembled and ready to install "out of the box", the **NML2-RS-FZ Series** is a 2 circuit design to maintain internal temperatures during freezer applications to minus 40C. Additionally, the fiberglass body with the extensive lens area requires Polycarbonate for the coldest temp.

Dimensions



Features and Specifications common to both products

- Stainless steel center mounting brackets installed standard on both units.
- Stainless steel wall mount brackets standard on both units.
- Factory installed 3-wire, yellow, six-foot, #16 AWG cord installed on both units with a stainless steel potted cordgrip.
- Standard potted internal drivers on both units.
- Premium LED chips with conformal coating on both units are standard

Options for both units

- Optional 3 or 4 wire male receptacle for quick disconnect and cordset available up to 20 feet.
- Optional Battery Back-up available on both units in Non-Off mode.

Warranty and Temperature

3 year limited warranty

Operating temperature.

-40C to 55C Operating temperature in "FZ" on-mode.

Certifications

- ETL listed UL 1598 for Wet Location
- ETL listed UL 1598 for Battery Back-Up
- NSF Certified
- IP69 rated

Ordering Information

Sample Catalog # – P4-H45-85-U-FZ-SDM

P4	H	45-85	U	FZ	SDM
A	B	C	D	E	F
Series	Lumen Package	CCT - CRI	Voltage	Mode	Other

Catalog Logic:

A. Series

P4 = 4 aluminum extrusion with SS endcaps.

B. Lumen Package -

H = HIGH Lumen package

C. CCT

45-85 = 4500K, 85 CRI

D. Voltage

U = (120V-277V)

UNB = (120V-277V) Non-Switching Battery -Back-Up

E. Mode

FZ - Freezer mode - ON - NON-Switching.

F. Other

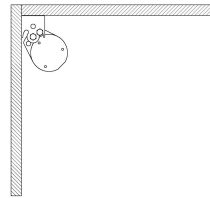
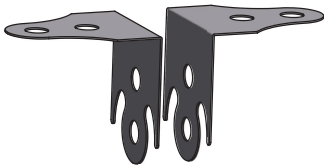
R3 = Mini-receptacle, 3 wire, Male

SDM = Stainless Dual mount kit (Standard)

* "FZ" model operates in Non-switching "on" mode for -20 to -40C temp ranges

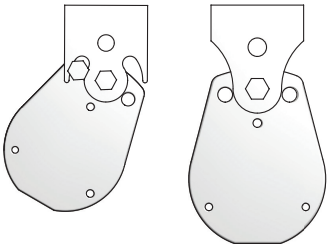
Standard Mounting Options (Included)

PL-SDM



Top view - Corner mount

(Includes 2 brackets and SS hardware)



Stainless Steel Dual Mounting Kit Illustration

Ordering Information

Sample Catalog # NML2-RS-24L-5K-U-PCF-FZ-FDM

NML2-RS	-24L-5K	U	PCF	FZ	FDM
A	B	C	D	E	F
Series	Lumen-CCT Package	Voltage	Lens	Mode	Other

Catalog Logic:

A. Series

NML2-RS = NON-METALLIC LED ROUGH SERVICE - 2 foot

B. Lumen Package - CCT

24L-5K = 24,000 / 5000K, 80 CRI

C. Voltage

U = (120V-277V)

UNB = (120V-277V) Non-Switching Battery -Up

D. LENS

PCF = Frosted Polycarbonate

E. Mode

FZ = Freezer mode. ON- NON-Switching

F. Other

DMS = Internal Dimming Motion Sensor.

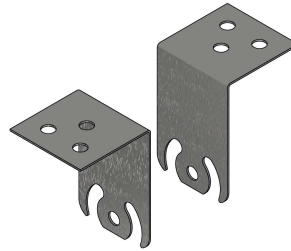
R3 = Mini-receptacle, 3 wire, Male

FDM = Stainless Dual mount (Standard)

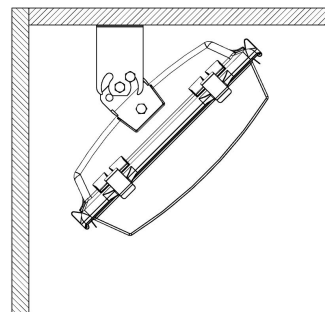
* "FZ" model operates in Non-switching "on" mode for -20 to -40C temp ranges

Standard Mounting Options (Included)

RS-FDM



(Includes 2 brackets and SS hardware)



Corner, Ceiling or wall mount configuration

